



# HEROES

happen {here}



Windows Server 2008



Microsoft  
Visual Studio 2008



Microsoft  
SQL Server 2008

Microsoft®  
**SQL Server™** 2008

# { **Pervasive Business Intelligence** }

Loke Han Kang  
Microsoft Singapore

Denny Daniel  
CHASSasia

# Challenges



- Changing business needs



- Data is locked inside business applications



- Learning curve for specialized BI tools

# Microsoft Business Intelligence

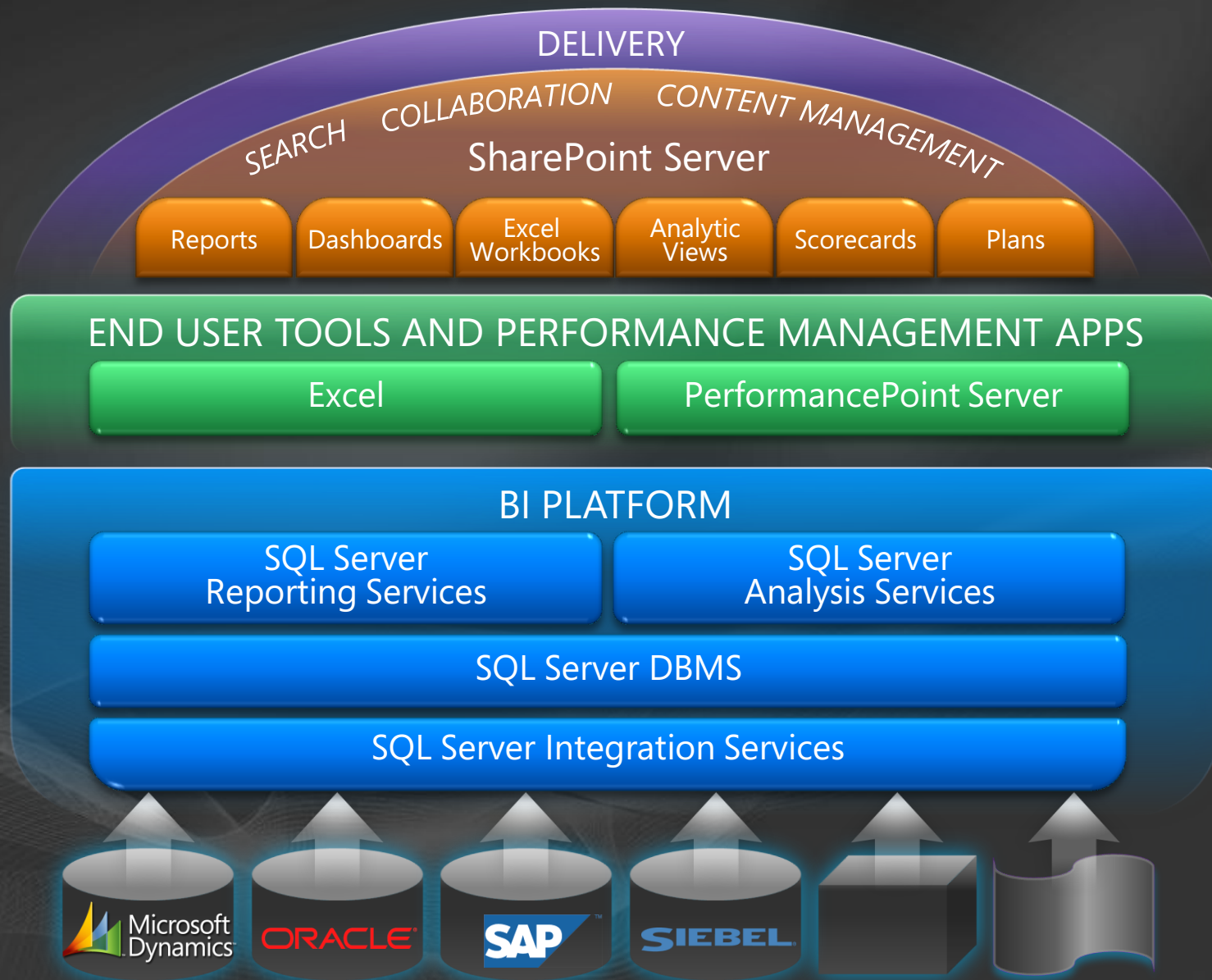
## Vision and strategy

Improving organizations by providing business insights to { **all** } employees, leading to better, faster, more relevant decisions

- Complete and integrated BI and performance-management offering
- Widespread delivery of intelligence through Microsoft Office
- Enterprise-grade and affordable



# End-to-End BI Offering





Microsoft®  
**SQL Server™** 2008  
Business Intelligence

***Unlock Your Data***

- Connect to data
- Integrate data
- Manage your data



***Deliver Relevant Information***

- Design intuitively
- Scale for the enterprise
- Deliver through Office



***Drive Actionable Insights***

- Predict outcomes
- Personalize the experience
- Embed insights



***Intelligent Data Platform***

# Unlock Your Data



Unstructured data



Legacy data: Binary files



Application database

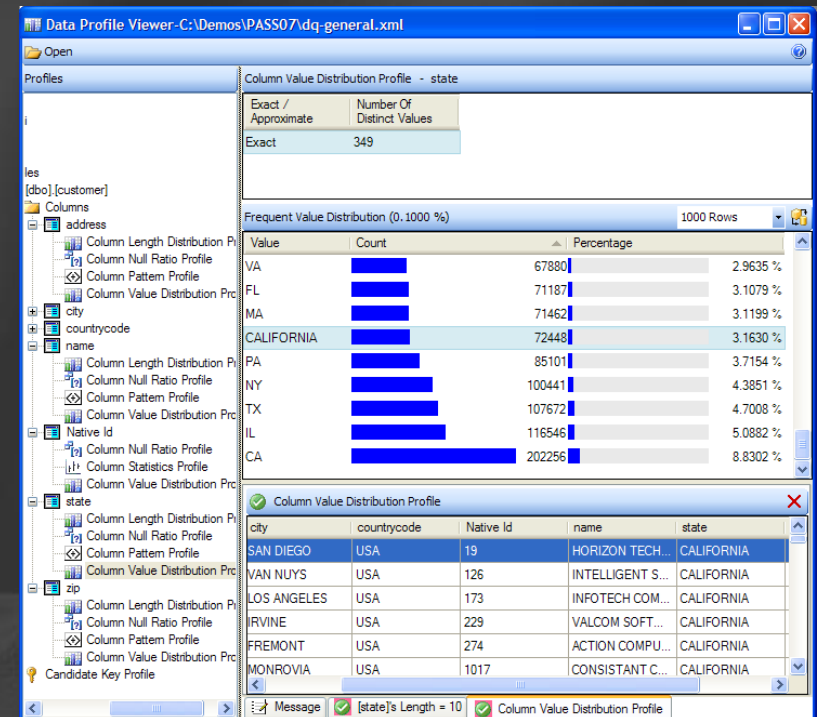


- Connect to data
  - Extensive connectivity
  - Native providers for Oracle, Teradata, SAP BW, and MySAP
- Integrate data
  - SSIS pipeline improvements
  - SSIS persistent lookups
  - Data profiling
- Manage your data
  - Data compression
  - DW query optimizations
  - Change Data Capture (CDC)

# Integrate Data

## Data profiling

- Integrated profiling
  - Data Flow Task
  - Profile any table
  - Output to file
- External Viewer
  - Profile per column
    - Outliers
    - Candidate keys
    - Value distribution
    - Patterns





{ **Unlocking Your Data** }

*demo*

Microsoft®  
**SQL Server™** 2008  
Business Intelligence

***Unlock Your Data***

- Connect to data
- Integrate data
- Manage your data



***Deliver Relevant Information***

- Design intuitively
- Scale for the enterprise
- Deliver through Office



***Drive Actionable Insights***

- Predict outcomes
- Personalize the experience
- Embed insights

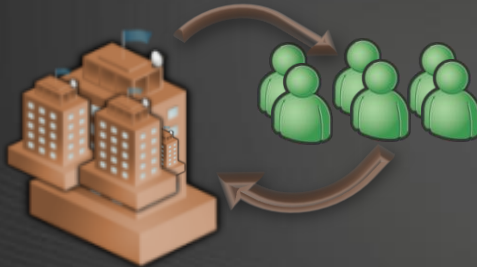


***Intelligent Data Platform***

# Deliver Relevant Information



- Design intuitively
  - Prescriptive analysis design
  - Flexible report design

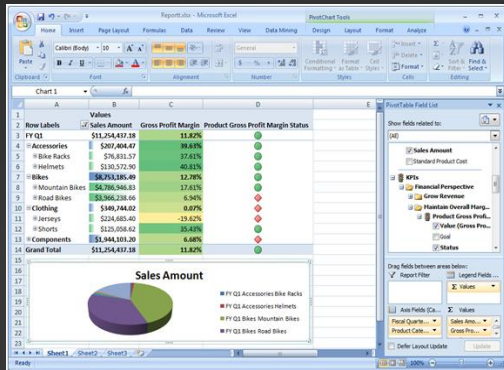


- Scale for the enterprise
  - Memory management
  - IIS agnostic
  - Read-only, scale-out
  - MOLAP writeback

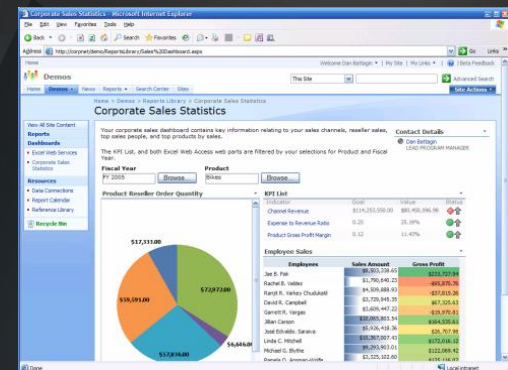


- Deliver through Office
  - New Word report rendering
  - SharePoint integration
  - Data mining add-ins

# Deliver Through Office



Analyze data in Excel

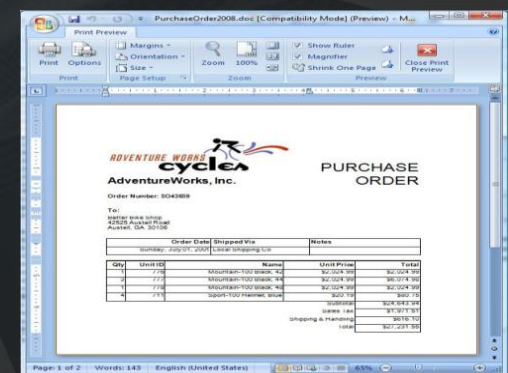
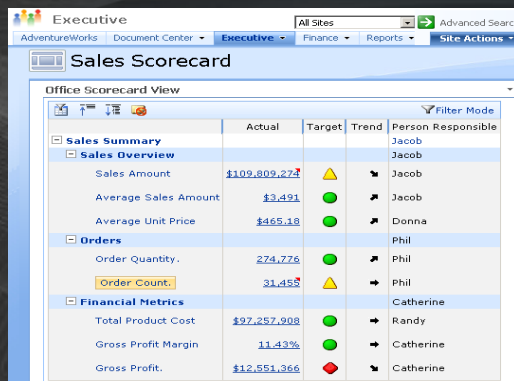


Publish reports and analysis to SharePoint



Collaborate and share reports, analysis, and scorecards

Render reports in Microsoft Office



{ **Scalable Analysis** }

*demo*



Microsoft®  
**SQL Server™** 2008  
Business Intelligence

***Unlock Your Data***

- Connect to data
- Integrate data
- Manage your data



***Deliver Relevant Information***

- Design intuitively
- Scale the enterprise
- Deliver through Office



***Drive Actionable Insights***

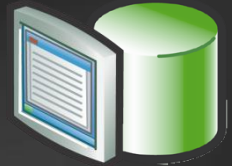
- Predict outcomes
- Personalize the experience
- Embed insights



***Intelligent Data Platform***

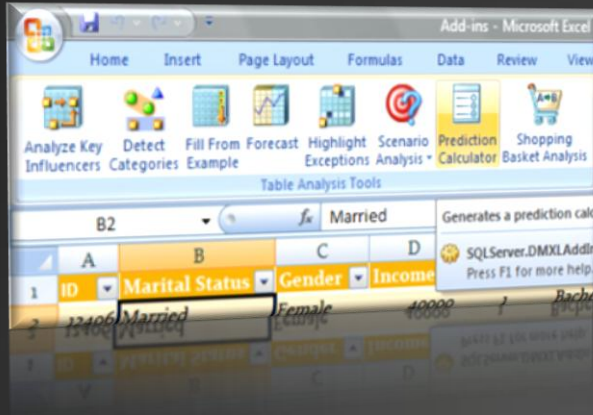
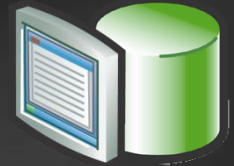
# Predict Outcomes

## SQL Server 2008 data mining



- Engine and algorithm improvements
  - Long-term predictions with Time Series
- Enhanced mining structures
  - Split training and testing partitions
  - Querying against structure data
  - Data filtering when building models
  - Cross-validation
- Data Mining Add-ins for Office 2007
  - Market Basket analysis
  - Prediction Calculator

# Drive Actionable Insights



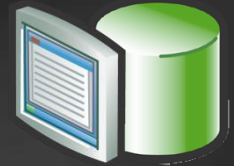
- Predict outcomes
  - Time Series algorithm
  - Data mining add-ins
- Personalize the experience
  - End-user authoring
  - Rich visualizations
  - Flexible layouts
- Embed insights
  - Report Viewer controls
  - Web service access

{ Predict Outcomes }

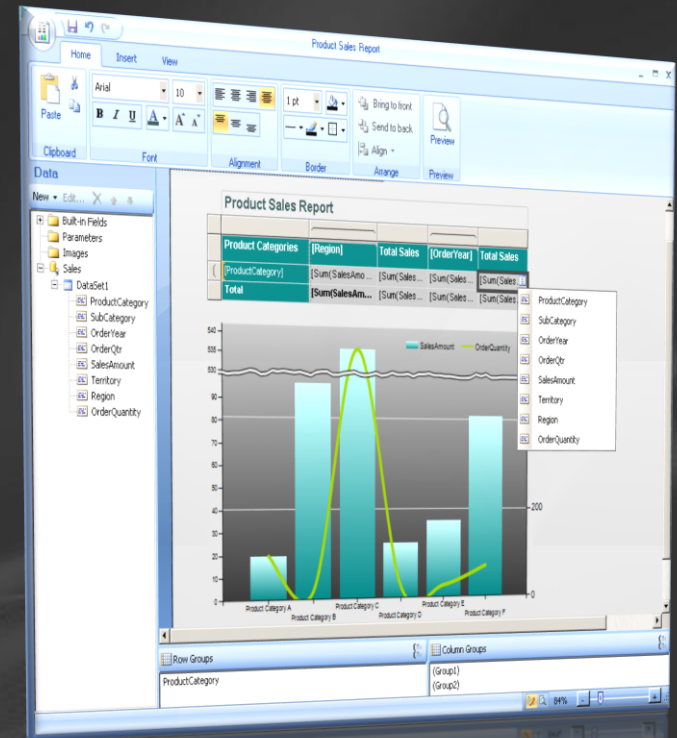
*demo*

# Personalize the Experience

## Enhanced Report Builder

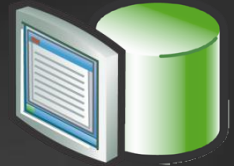


- Intuitive authoring environment for business users
  - Support for both semantic layer and direct SQL access
  - Ability to customize reports regardless of initial design location
  - Seamless modification of data fields and chart types
  - Support for
    - Relational and multidimensional data
    - Multiple data sources
    - Multiple regions
  - New visualization controls

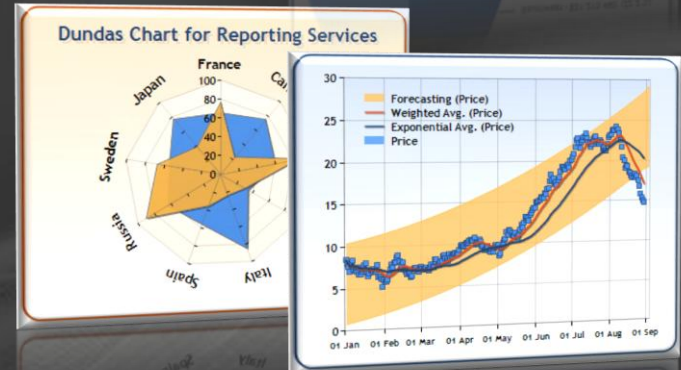
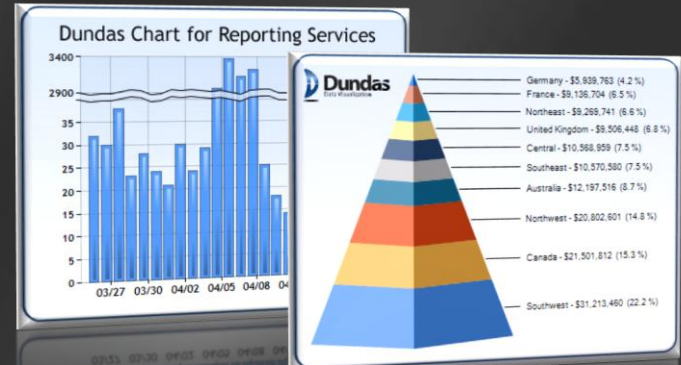




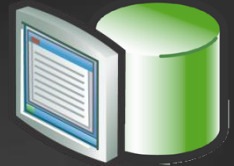
# Impactful Report Authoring



- Powerful visualizations
  - Charts
  - Gauges
- Rich text support
  - Mixed styles and hyperlinks within a single text box
- Report Designer
  - Data pane
  - Improved dialog boxes
  - Snap-to lines
  - Grouping panes



# Flexible Report Layout



- New data region structure: Tablix
  - The best of Table merged with the best of Matrix:

## Table + Matrix

Customer	Growth
Retail	
Odin	19%
Bikes, Inc.	322%
Wholesale	
ABC Corp.	19%
Thor, Ltd.	322%
Grand Total	56%

		2001	2002	Total
Retail	Odin	1,115	1,331	2,446
	Bikes, Inc.	152	642	794
Wholesale	ABC Corp.	11,156	13,312	24,468
	Thor, Ltd.	1,523	6,421	7,944
Grand Total		13,946	21,706	35,653

{ **Flexible Reporting** }

*demo*

# Scalable BI solutions with Zap & SQL Server

- **Starbucks Philippines (Rustan Coffee Corporation).**
  - SQL Server 2008
  - 25 GB data upload each month.
  - 1.2 TB DW with 4 years data.
  - Data distributed across 130 stores and the Corporate HQ.
- 
- **Video-Ezy**
  - SQL Server 2005 (evaluating SQL Server 2008 upgrade). Large DW.
  - Largest Cube: 34 GB
  - 32 Million Dimension Members in a Single Cube
  - Full Load – Processes 750 Million records in 3 hours.
  - Incremental Load – takes 20 minutes only (Daily – once).
- 
- **Queensland Police Service**
  - Upto 10,000 Users accessing Zap.
  - DW in SQL Server 2005. 2.5 TB



# Summary

- SQL Server 2008 provides a comprehensive and scalable BI platform that lets you
  - Unlock your data silos
  - Deliver relevant information to users through Microsoft Office
  - Drive insights within your organization through powerful reports and comprehensive analytics
- Is part of Microsoft's End-to-End BI offering
  - Complete and integrated
  - Pervasive delivery through Microsoft Office
  - Enterprise-grade and affordable



# Resources

- Learn more about Business Intelligence  
<http://www.microsoft.com/sql/2008/solutions/bi.mspx>
- Learn more about SQL Server 2008  
<http://www.microsoft.com/sql/2008/default.mspx>
- Discover SQL Server 2008: Webcasts, Virtual Labs, and White Papers  
<http://www.microsoft.com/sql/2008/learning/default.mspx>
- SQL Server 2008 training  
<http://www.microsoft.com/learning/sql/2008/default.mspx>
- Download latest SQL Server CTP  
<http://www.microsoft.com/sql/2008/prodinfo/download.mspx>
- Join the Singapore SQL user group  
<http://sgsql.sqlgroups.com>

The Microsoft logo is displayed in a large, bold, white sans-serif font. Below it, the tagline "Your potential. Our passion." is written in a smaller, italicized white sans-serif font. The background is dark gray with faint, abstract, wavy lines that create a sense of motion and depth.

# Microsoft®

*Your potential. Our passion.™*

© 2008 Microsoft Corporation. All rights reserved. Microsoft, Windows, Windows Vista and other product names are or may be registered trademarks and/or trademarks in the U.S. and/or other countries. The information herein is for informational purposes only and represents the current view of Microsoft Corporation as of the date of this presentation. Because Microsoft must respond to changing market conditions, it should not be interpreted to be a commitment on the part of Microsoft, and Microsoft cannot guarantee the accuracy of any information provided after the date of this presentation. MICROSOFT MAKES NO WARRANTIES, EXPRESS, IMPLIED OR STATUTORY, AS TO THE INFORMATION IN THIS PRESENTATION.